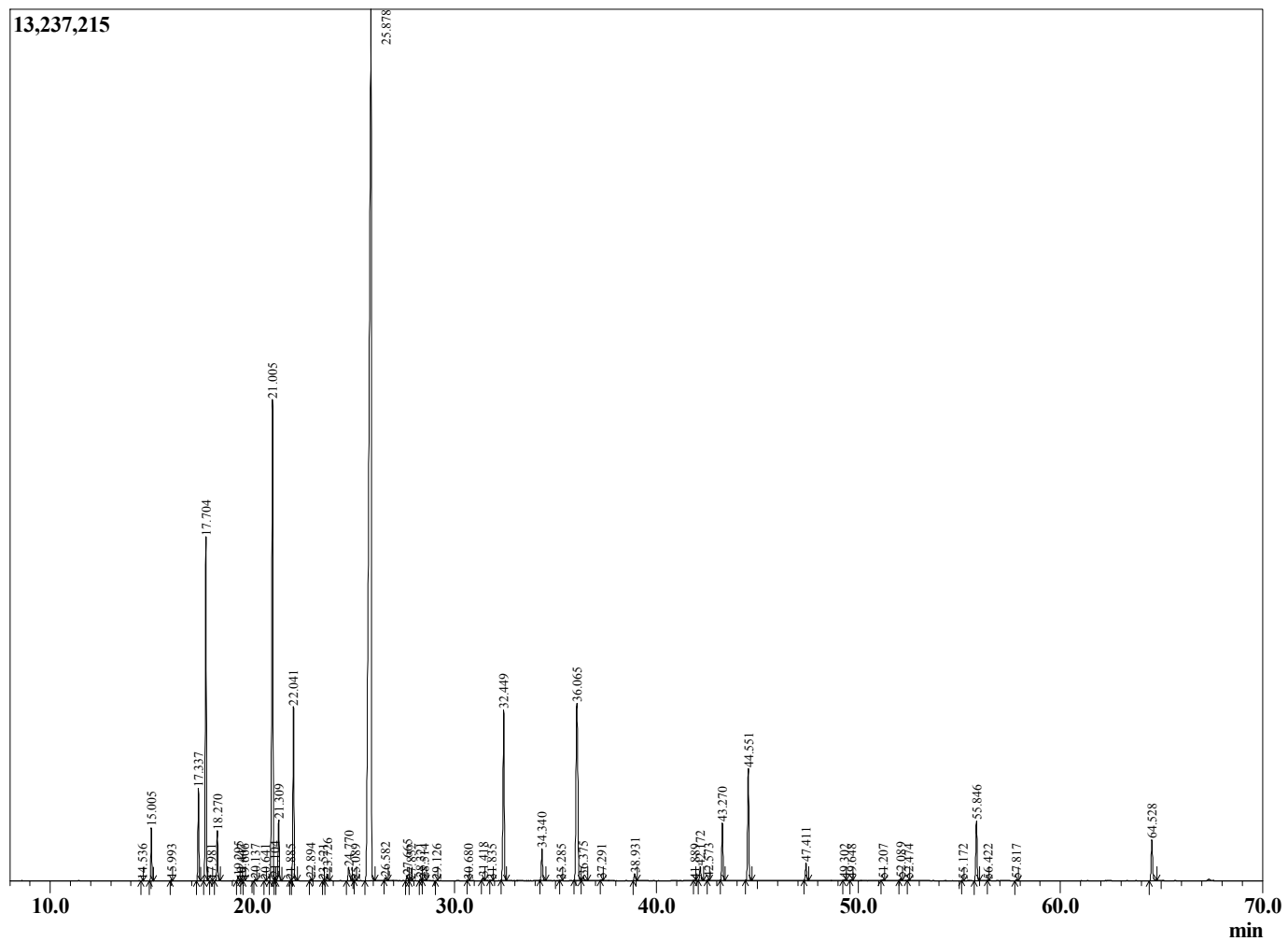


Sample Information

Sample Type : Essential Oil  
 Sample Name : Citrus aurantium Flower

Neroli  
 Lot# TUR26-RT  
 Country: Tunisia

Chromatogram Citrus aurantium Flower



R.Time	Name	Area%
14.536	alpha-Thujene	0.01
15.005	alpha-Pinene	1.12
15.993	Camphene	0.02
17.337	Sabinene	2.08
17.704	beta-Pinene	7.88
17.981	Unidentified	0.02
18.270	Myrcene	1.15
19.295	Pseudolimonene	0.10
19.447	alpha-Phellandrene	0.00
19.606	3-Carene	0.01
20.137	alpha-Terpinene	0.02
20.641	para-Cymene	0.01
21.005	Limonene	13.07
21.104	beta-Phellandrene	0.06
21.309	(Z)-beta-Ocimene	1.44
21.885	Benzeneacetaldehyde	0.01
22.041	(E)-beta-Ocimene	4.18
22.894	gamma-Terpinene	0.04
23.521	Unidentified	0.01
23.726	cis-Linalool oxide (furanoid)	0.17
24.770	Terpinolene	0.48
25.089	Unidentified	0.01
25.878	Linalool	45.58
26.582	Phenethyl alcohol	0.09
27.665	allo-Ocimene	0.13
27.852	Unidentified	0.01
28.321	Benzyl nitrile	0.05
28.514	Unidentified	0.02
29.126	Camphor	0.01
30.680	Unidentified	0.01
31.418	Terpinen-4-ol	0.08
31.835	para-Cymen-8-ol	0.02
32.449	alpha-Terpineol	4.86
34.340	Nerol	0.88
35.285	Neral	0.01
36.065	Linalyl acetate + Geraniol	7.36
36.375	2-Phenethyl acetate	0.13
37.291	Geranial	0.02
38.931	Indole	0.20
41.889	delta-Elementene	0.01
42.172	Methyl anthranilate	0.40
42.573	alpha-Terpinyl acetate	0.02
43.270	Neryl acetate	1.54
44.551	Geranyl acetate	3.11
47.411	trans-beta-Caryophyllene	0.49
49.302	(E)-beta-Farnesene	0.03
49.648	alpha-Humulene	0.01
51.207	Germacrene D	0.02
52.089	Bicyclogermacrene	0.05
52.474	(E,E)-alpha-Farnesene	0.01
55.172	alpha-Elementol	0.01
55.846	trans-Nerolidol	1.69
56.422	Unidentified	0.01
57.817	Globulol	0.02
64.528	(2E,6E)-Farnesol	1.24
		100.00